



**MISTORIA**  
ESTATE AGENTS



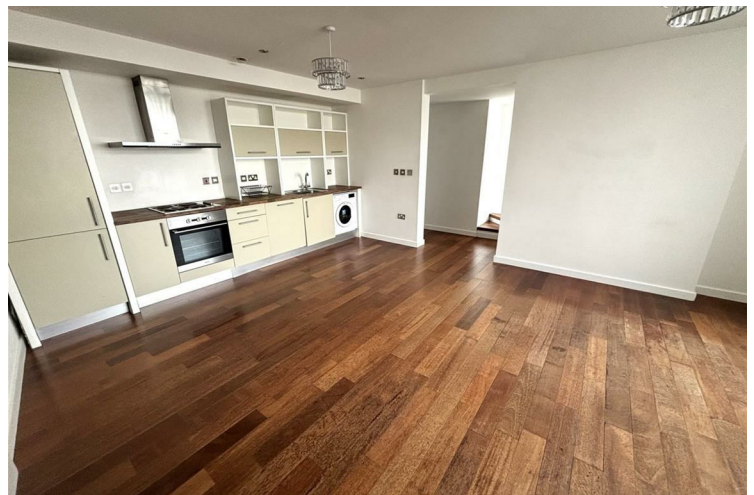
## 2105 Beetham Tower Liverpool

**£825 PCM**

Nestled within the iconic Beetham Tower, this modern apartment offers a unique opportunity to experience city living at its finest. Situated on the 21st floor, the property boasts stunning views over Liverpool, providing a picturesque backdrop that changes with the seasons.

The apartment features a well-appointed reception room, perfect for both relaxation and entertaining. The spacious bedroom is designed for comfort, ensuring a peaceful retreat at the end of the day. The bathroom is contemporary and stylish, equipped with modern fixtures to meet your daily needs.

The fully fitted kitchen is a highlight of the property, offering ample space and modern appliances that will delight any home cook. With a total area of 710 square feet, this apartment provides a generous living space that is both functional and inviting.





- AMAZING RIVER VIEWS • INTERCOM • FULLY FITTED KITCHEN • SECURE ENTRY SYSTEM • 24HR CONCIERGE • AVAILABLE NOW

#### Full Description

AVAILABLE NOW - Mistoria are pleased to offer this 21st floor one bed open plan part furnished apartment, fully fitted kitchen including oven & hob, washing machine, fridge/freezer, dishwasher and under wall unit lighting. The property also benefits from electric centrally controlled heating, BT point, terrestrial/satellite TV point, halogen down lighters to bathroom, kitchen and hallway, double glazing. The bathroom is of contemporary style with natural slate flooring and co-ordinated wall tiles, secure door entry system with 24 hour concierge and monitored CCTV security system, Side views over the river. The apartment size is 495 sq ft. Suitable for the professional person(s) who enjoys City living and would certainly enjoy this much sought after location. The building has an attractive feature entrance lobby, with high speed lifts to all floors. Sorry no parking with this apartment.

#### COUNCIL TAX BAND C, MINIMUM OF A SIX MONTH LET

Beetham Tower is a recognised Liverpool Landmark constructed by `Beetham Organization` which is a 30 storey residential apartment block opposite Liverpool's world famous waterfront.

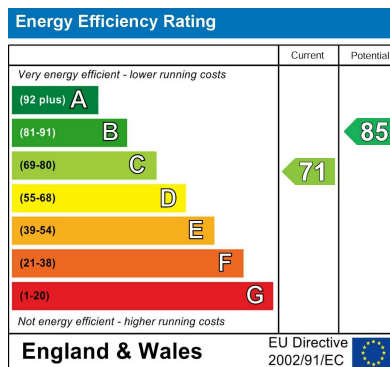
Before the tenancy starts:

" A holding deposit will be payable at the start of the application process, this will be the equivalent of 1 weeks rent and will be deductible against the first month's deposit payment. In the event that information provided within the application is not correct or accurate this holding deposit will become non-refundable.

Please ensure you disclose any adverse credit on any application, as this may result in a failure of your application and reference monies are non-refundable A holding deposit will be payable at the start of the application process, this will be the equivalent of 1 weeks rent and will be deductible against the first months rental payment . In the event that information provided within the application is not correct or accurate this holding deposit will become non-refundable.







Agents Note: Whilst every care has been taken to prepare these particulars, they are for guidance purposes only. All measurements are approximate and are for general guidance purposes only and whilst every care has been taken to ensure their accuracy, they should not be relied upon and potential buyers/tenants are advised to recheck the measurements

Pall Mall Liverpool Mistoria  
22 Pall Mall  
Liverpool  
L3 6AL

0151 282 1539  
info@mistoria.co.uk  
mistoria.co.uk

